



STRIKER 45M

Conveyor



Unlimited Solutions
for Limited Resources

Radial Stacker



Radial Stacker Features

Striker 45m radial stacking conveyor have high capacity stockpiling abilities and can be set up on site to produce stockpile capacities in excess of 70,000 cubic meters. They are designed and manufactured in accordance with Australian Mining standards and international structural standards, with no complicated foundation work.

Conveyor Truss

The conveyor truss consists of heavy-duty lattice structure framework that is structurally engineered to the highest standards. The conveyor is designed to fit inside shipping containers for easy transport to any location around the world.

Conveyor Belt & Related Items

The conveyor belt consists of multiple layers of reinforced nylon ply encased of rubber covers, with the carry side providing the thicker cover for longer wear life. Bolt up type take up rods allow the ability to tension and loosen the belt with the adjusting taking place on the tail pulley shaft located in heavy duty bearings on slide rails. The head and tail pulleys fabricated and machined from nominal pipe according to Striker standards and specifications required and lagged to provide greater traction to the belt. With the choice of electric or hydraulic drive, each are enclosed and weatherproof with transmissions to suit.

Supplied on all Striker conveyors are two belt scrapers which each have easily replaceable rubber blades. One scraper is positioned at the head end of the conveyor scraping the dirty side of the belt while the other is a vee type situated just before the tail pulley preventing spilt material from becoming caught between the belt and tail pulley. The conveyor is fully guarded to mines department regulations.

Idlers

Three roll trough idlers are the main carrying idlers on the conveyor. The number of these is dependent on the length of the conveyor, but otherwise they are equally spaced up the truss (optional adjustable transition idlers are also available). Positioned at the tail, underneath the receive hopper, are impact idlers. These help with absorbing some of the shock taken from loading. On the return side of the belt, suitable sized return steel rolls are strategically placed on the underside of the conveyor and have individual easy replacement properties.

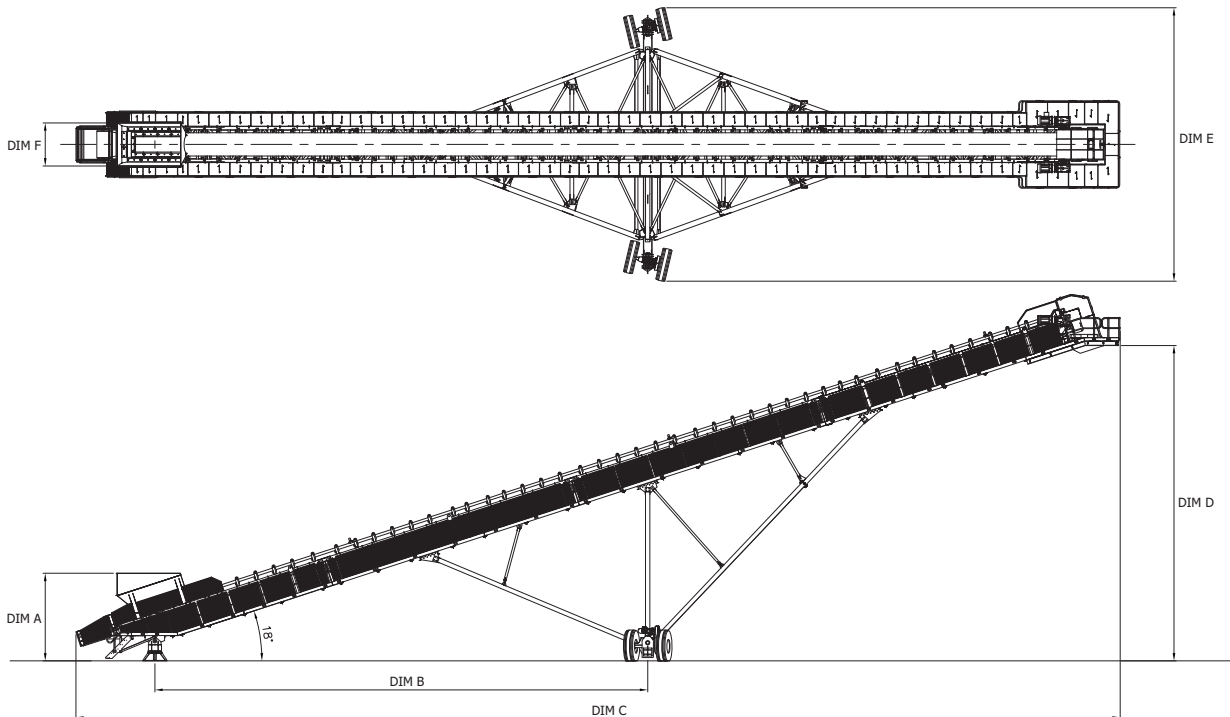
Mobility & Stockpiling Information

Each conveyor has different stockpiling capabilities. Such variations as width, length and material are all factors to the size of a stockpile. Depending on the model, the conveyor is mounted on two swiveling wheels and a pivot at the tail end to give radial stockpiling through an arc of approximately 300 degrees. The main conveyor frame can be raised or lowered with the help of a hydraulic lifting cylinder, allowing the conveyor to alternate stockpiling heights.

Options

For options that are available to the client, refer to the following.

- Radial drive
- Weigh scales
- Tungsten scrapers
- Impact beds
- Dust covers
- Head chutes



| MODEL | DIMENSIONS | | | | | | WIDTHS | | | | |
|----------------|------------|-------|-------|-------|-------|-------|--------|-----|------|------|------|
| | DIM A | DIM B | DIM C | DIM D | DIM E | DIM F | 600 | 750 | 1000 | 1200 | 1500 |
| ST-4500 SERIES | 4027 | 22650 | 47992 | 14496 | 12570 | 1978 | | | ✓ | ✓ | ✓ |



STRIKER AUSTRALIA Pty Ltd

Perth Office: 9 Egmont Road Henderson WA 6166, Australia Ph: +61 8 9437 3533 Fax: +61 8 9437 3544

Brisbane Office: 26 Leonard Crescent Brendale Queensland 4500, Australia Ph: +61 7 3881 1227 Fax: +61 7 3881 1996

STRIKER CRUSHING & SCREENING Sdn. Bhd.

Malaysia Office: Plot No. 44, PT8286, Jalan Johan 2/4, Estate Perindustrian Pengkalan 2, Fasa 2, 31550 Pusing, Batu Gajah, Perak. Ph: +605 366 8188 Fax: +605 365 2688

STRIKER ENGINEERING MACHINERY (SHENYANG) Co., Ltd.

China Office: Room 3010, Royal WanXin International Mansion, 110003 Shenyang, China. Ph: +86 (24) 2353 4388 Fax: +86 (24) 2353 4288

E-mail: info@strikercrushing.com Website: www.strikercrushing.com

All reasonable steps have been taken to ensure the accuracy of this publication. However, due to our policy of continual product development, Striker reserve the right to change details without prior notice. All machines supplied in accordance with our standard conditions. Illustrations and photos may show optional equipment.